

Research and art connect for sustainability

Christian Stiegler¹, Alexander Knohl^{1,2}, Fabian Brambach³, Jana Juhrbandt⁴, Nina-Maria Knohl⁵, Marie Luisa Allemeyer⁶, Ajeng Nurul Aini⁷, Adhari Donora⁸, Immanuel Manurung⁹, and Aiyen Tjoa¹⁰

¹Bioclimatology, University of Göttingen, Göttingen, GERMANY

²Centre of Biodiversity and Sustainable Land Use (CBL), University of Göttingen, Göttingen, GERMANY

³Biodiversity, Macroecology and Biogeography, University of Göttingen, Göttingen, GERMANY

⁴Environmental and Resource Economics, University of Göttingen, Göttingen, GERMANY

⁵Centre for Collection Development, University of Göttingen, Göttingen, GERMANY

⁶Forum Wissen, University of Göttingen, Göttingen, GERMANY

⁷ruangrupa, Jakarta, INDONESIA

⁸Rumah Budaya Sikukeluang, Riau, INDONESIA

⁹The Directorate of Export for Agriculture and Forestry Products, The Ministry of Trade, Jakarta, INDONESIA

¹⁰Faculty of Agriculture, Tadulako University, Palu, INDONESIA

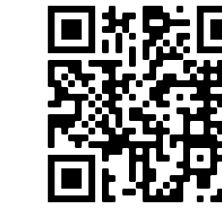


Background

Research and arts have a common interest in understanding and preserving an intact environment, promoting social equality and strengthening sustainability. Therefore, it seems natural that research and arts go hand in hand to collect new approaches, perspectives and insights to serve as media for sustainable environments and to communicate science to society.

The University of Göttingen (Germany) and the University of Jambi (Indonesia), with their *Collaborative Research Centre 990: Ecological and Socioeconomic Functions of Tropical Lowland Rainforest Transformation Systems (Sumatra, Indonesia)*, and the *Forum Wissen*, Göttingen's academic museum have launched a joint cooperation with *documenta fifteen* in Kassel (Germany), the most recognized exhibition of contemporary art worldwide, and *Rumah Budaya Sikukeluang*, a collective of artists from Riau province on Sumatra Island, Indonesia. Here, we present some highlights of this joint research and arts collaboration.

Learn more about the *EFForTS*-project:



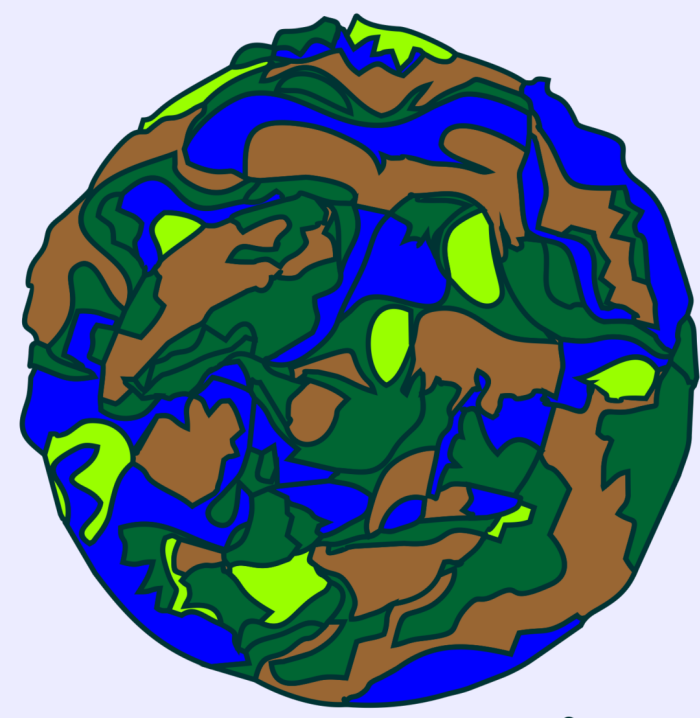
documenta fifteen:



Semah Bumi Festival

Semah Bumi (balancing-serving-seeding) festival took place in March 2022 in Permatang Kabau, a local community on Sumatra which is dominated by rapid and substantial land transformation from tropical forests to agricultural landscapes, such as oil palm and rubber plantations.

This festival connected art, science, nature and society. The artists and the researchers exchanged information with the local community about the latest findings in sustainability research, and to learn more about local conditions, culture, beliefs, etc.



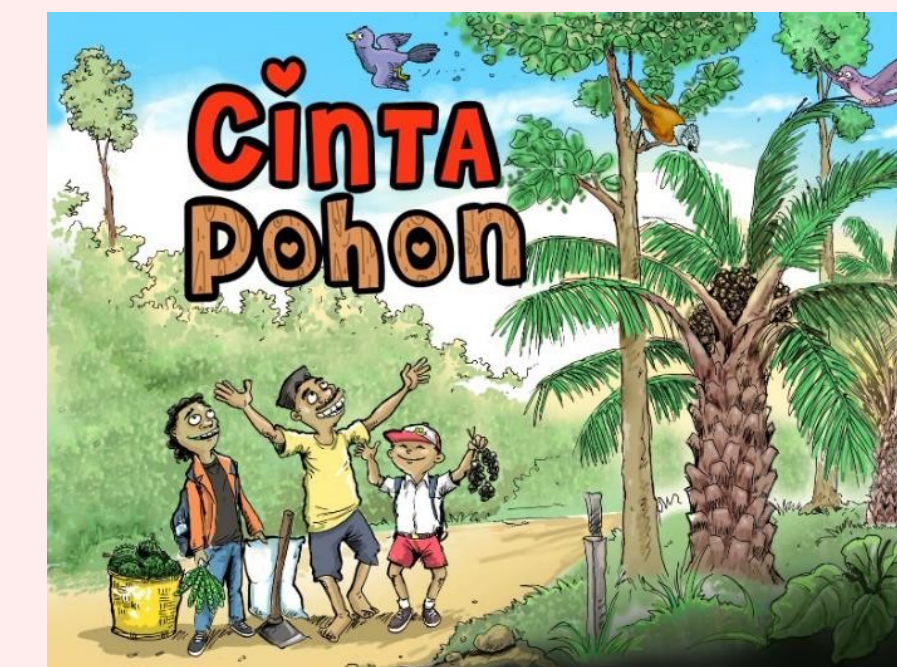
SEMAB BÜMI
FESTIVAL OF SCIENCE, NATURE, SOCIETY AND THE ARTS



Watch a performance by the artist Rani Jambak



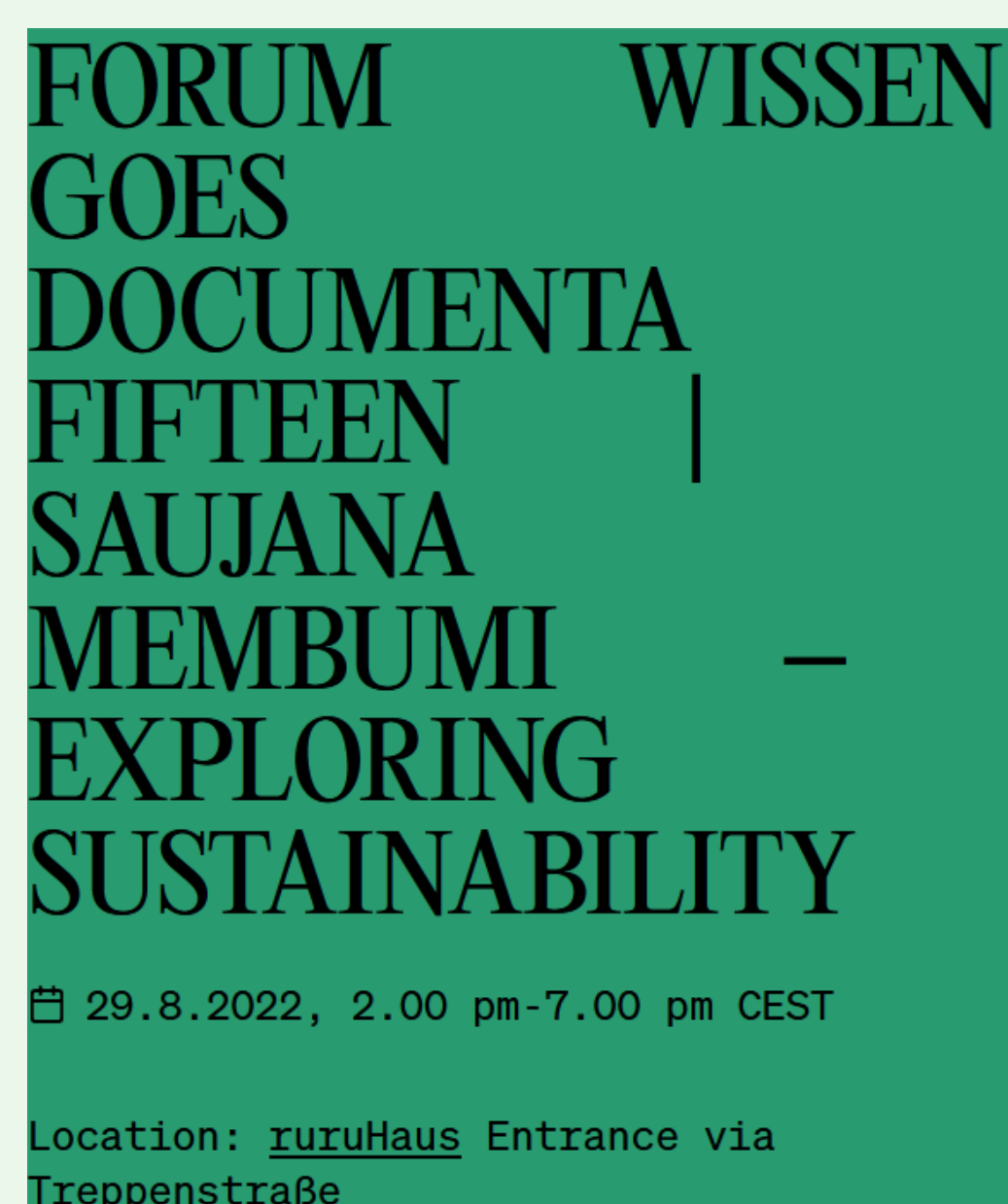
Sustainable Village Project



The Semah Bumi festival served as a kick-off event to initiate the long-term **Sustainable Village Project**, which explores and implements locally adjusted transformation pathways towards more sustainable land-use and value chain management using a *Participatory Action Research* approach.

documenta fifteen is supporting this project and 1 euro from every *documenta fifteen* ticket sold will go towards this project.

Forum Wissen goes documenta fifteen



In the joint event **Forum Wissen goes documenta fifteen**, we reflected on art and science through public discussions, behind-the-scenes presentations and hands-on workshops to further explore different aspects of sustainability.



Explore villager's perceptions, visions and concerns:

Workshop future visions



Rice production and food supply



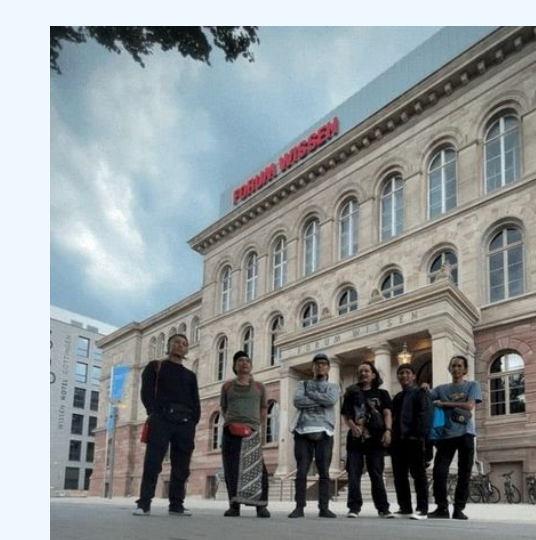
Creativity is needed!



Land use and sustainability



Saujana membumi - Exploring Sustainability



In this special exhibition at *Forum Wissen*, Göttingen's academic museum, science, art and society jointly explore new pathways to sustainability. The exhibition aims to inform the public about the very topical research of the *EFForTS*-project, as well as to make the subject of sustainability more accessible by linking the scientific and artistic perspectives. Visitors will get an impression of the scientific work on site, both from a bird's eye view via impressive drone videos, and as a close up via microscopic images of plants.

Back to School



In this collaboration with local schools in the Göttingen area, we explore how teenagers in Germany perceive sustainability and together, we create hands-on exhibits for *documenta fifteen* and *Forum Wissen*.



Picture and video credits

Fabian Brambach, Dipra, *documenta fifteen*, *Forum Wissen*, Anna Greger, Jana Juhrbandt, Alexander and Nina-Maria Knohl, Immanuel Manurung, ruangrupa, Rumah Budaya Sikukeluang, Christian Stiegler, Aiyen Tjoa, Meike Wollni