



Quick Start Guide Media Technology Type A3

PC in the lecture hall

Turn on the PC and, if there, Smart Podium.
Mouse and keyboard are located under the lecture desk.

Login:

Username: gwdg\username

OR: ug-student\name.firstname

Password: *****

Notebook (optional)

Connect to the available ports (HDMI & VGA). If sound should be played, please use the HDMI cable or the audio cable when using VGA. For using the Smart functions on the notebook, also plug in the USB cable.

Turn on Smart Board

Turn on the Smart Display (1).

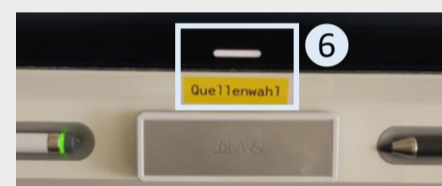
Choose whether you want to use the SMART Display with the lecture hall PC or your own notebook (6). If necessary, you can also use the connection field below the keys for this purpose (5).

Info: To use the SMART functions with your notebook, you must connect the USB cable to the SMART display in addition to the HDMI cable. You can obtain a license for the SMART notebook software here:

<https://s.gwdg.de/U274iz>

If necessary, adjust the height of the Smart Display with the buttons on the right side of the board (partially also on the back).

- 2 Adjust the playback volume
- 3 Freeze & unfreeze the screen content
- 4 USB port for use with the connected PC or the iQ Experience



Button at the bottom in the centre of the SMART display

Buttons on the left OR right side of the SMART display

SMART Display 8084 - Basic Functions

Use the pens below the display to write and create notes on the touch screen in different colours. Use your fist or the "sponge" to remove text that has already been written.

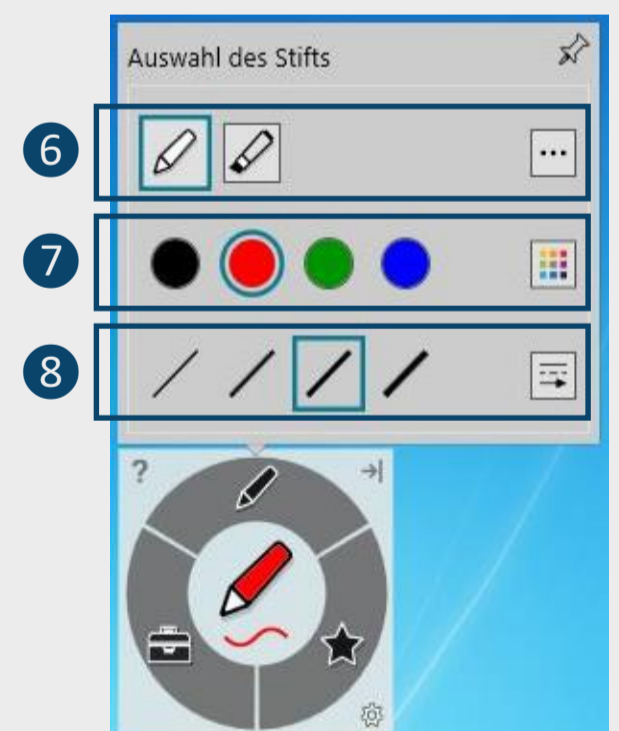
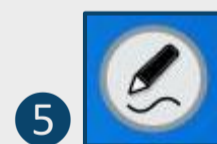
If this is not possible automatically after logging in, please start the "Smart Ink" software.

For example, you have the following options:

- Annotating PowerPoint slides during the presentation
- Using the software "SMART Notebook" as a substitute for a blackboard
- Annotating PDF files, e.g. with the help of the "PDF Annotator" software.

Detailed instructions on how to use the SMART Board can be found under the QR code.

When you use the SMART Board pen, a pen icon appears on the screen (5). By clicking on this, you can select the type of pen (6), change its colour (7) or its line width and type (8).



Turn off media technic!

To do this, press the „**Ende**“ button on the touchpanel to switch of the Smart Display before you leave the room.

Please do not change anything in the wiring!

Please report malfunctions to the telephone number 0551 39-**1171!**



Für detaillierte Anleitungen und deutsche Version QR-Code scannen
For English version please check the QR-Code

<https://s.gwdg.de/b9lL2H>